

Frisbee Golf with Compass Game

This game combines Frisbee Golf with Compass reading for a fun competition within a patrol or between patrols.

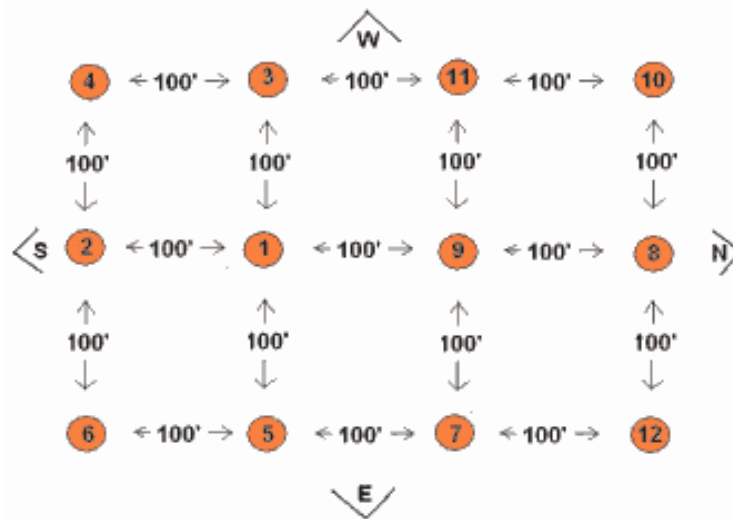
Required:

Large field (300' x 200' - football field size)
Frisbee for each team
12 small orange cones

Compass for each team
Print out of Game Sheet for each team
Pen for each team

Course Layout:

Number each cone from 1 to 12 by writing the number on the inside with a permanent marker. You could use paper plates or other objects. Using a compass, lay out the cones in a large field like this diagram. (Notice North is to the right!)



The Game:

- 4 teams. (2 man teams work best)
- One scout throws the Frisbee; the other scout works the compass, points, keeps track of the number of throws, and writes down the cone number.
- All teams start at cone 1 at the same time. Everyone finishes at cone 9. 1st team to navigate the course the fastest in the fewest throws with the right cone numbers written down on their game sheet wins.

The Rules:

- Teams must switch thrower/tracker roles each hole.
- Teams must throw their Frisbee until it hits the cone before they can lift it to find its number.
- Throwers can take no steps while holding the Frisbee.

Scoring: The simplest way to score is have the first team to final cone with the correct cone numbers be the winner. You could add a 5 second or 10 second penalty for every throw over 9 taken, but more throws tend to take more time anyway.

TEAM SCORING SHEETS

RED TEAM – START AT CONE # 1

FLY 225° 140' CONE # _____

FLY 0° 100' CONE # _____

FLY 45° 140' CONE # _____

FLY 135° 140' CONE # _____

FLY 0° 100' CONE # _____

FLY 0° 100' CONE # _____

FLY 270° 100' CONE # _____

FLY 225° 140' CONE # _____

FLY 90° 100' CONE # _____

BLUE TEAM – START AT CONE # 1

FLY 135° 140' CONE # _____

FLY 270° 100' CONE # _____

FLY 315° 140' CONE # _____

FLY 0° 100' CONE # _____

FLY 90° 100' CONE # _____

FLY 315° 140' CONE # _____

FLY 90° 100' CONE # _____

FLY 135° 140' CONE # _____

FLY 270° 100' CONE # _____

PURPLE TEAM – START AT CONE # 1

FLY 45° 140' CONE # _____

FLY 0° 100' CONE # _____

FLY 270° 100' CONE # _____

FLY 270° 100' CONE # _____

FLY 135° 140' CONE # _____

FLY 225° 140' CONE # _____

FLY 135° 140' CONE # _____

FLY 0° 100' CONE # _____

FLY 0° N 100' CONE # _____

GREEN TEAM – START AT CONE # 1

FLY 315° 140' CONE # _____

FLY 0° 100' CONE # _____

FLY 135° 140' CONE # _____

FLY 90° 100' CONE # _____

FLY 180° 100' CONE # _____

FLY 225° 140' CONE # _____

FLY 270° 100' CONE # _____

FLY 0° 100' CONE # _____

FLY 45° 140' CONE # _____